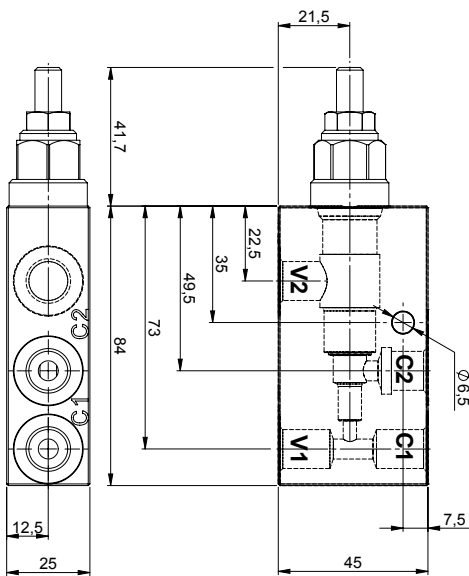
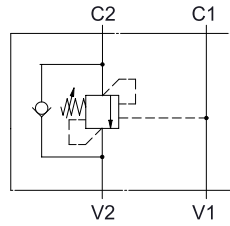
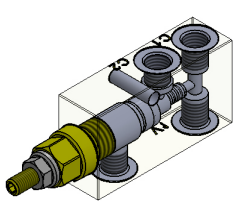




Load holding valves

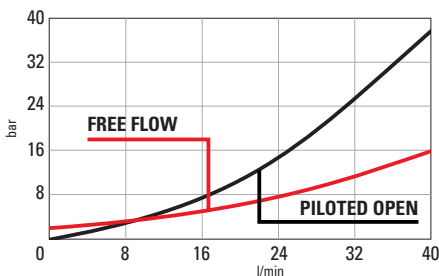
Normale 79 S L 1/4



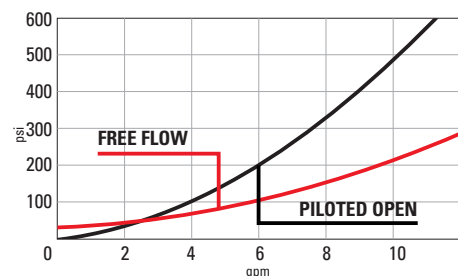
Technical Details

| | |
|--|--|
| body material | zinc plated steel |
| capacity | 40 lpm (10 gpm) |
| ports size | V1, V2, C1, C2: G 1/4 |
| max operating pressure | 350 bar (5000 psi) |
| pilot ratio | 4:1 |
| maximum setting | 420 bar (6100 psi) |
| minimum setting | 60 bar (870 psi) |
| pressure increase per turn | Spring M: 103 bar/turn Spring D: 171.5 bar/turn |
| pressure setting established @ | cracking pressure (1in3/min) |
| maximum valve leakage at reseal | 5 drops / minute |
| operating characteristic | standard |
| reseal | >80% |
| maximum recommended load pressure at maximum setting | 330 bar (4800 psi) |
| adjustment screw internal hex size | 4 |
| seal-lock hex size | 13 |
| seal-lock torque | 12-15 Nm (9-11 lbf ft) |
| valve weight | 0,75 Kg (1,65 lbs) |
| external component surface treatment | zinc plating + sealing |
| temperature range | -30 to 100°C (-22 to 212°F) with BunaN seals |
| fluids | Mineral-based or synthetics with lubricating properties at viscosities of 10 to 500 mm ² /s (cSt) |
| filtration | Nominal value max. 10µm (NAS 8) / ISO 4406 19/17/14 |

- Backpressure at port 2 adds to the effective relief setting at a ratio of 1 plus the pilot ratio times the backpressure
- Set your counterbalance valve at least 1.3 times the maximum load induced pressure
- Indicated Reseat value is obtained with valve set @ maximum setting
- For customized settings and for settings from 360 bar to 420 bar please consult factory
- For special ports please consult factory



Performance curves



Spring M = 60-210 bar
(Standard Setting 200 bar)
 Spring D = 110-350 bar
(Standard Setting 350 bar)

The information contained in this page is valid at the time of going to print. Valvole Italia reserves the right to modify its products without notice and does not accept liabilities for damages incurred as a consequence of these changes. To make sure you are seeing the latest product information, please visit www.valvoleitalia.it

S | N | S | 7 | 9 | L | 0 | 4 | G | 1 | 4 | | 0 | 0 | 0

